

CASE STYLES

OUTLINE DIMENSIONS (inch/mm)

case no.	A	B	C	D	E	F	G	H	J	K	L	M	N	P	Q	R	S	T	wt. grams.	NOTES*
NNN150	.50 12.70	.48 12.19	.255 6.48	.240 6.10	.23 5.84	.21 5.33	.06 1.52	.100 2.54	.09 2.29	.16 4.06	.020 .51	.09 2.29	.005 .13						1.9	A1, E1, F9, B7
PPP83	.75 19.05	.38 9.65	.20 5.08	.010 .25	.05 1.27	.020 .51	.200 5.08	.075 1.91	.200 5.08	.14 3.56	.060 1.52								1.6	A13, E2
QQQ130	—	.31 7.87	.20 5.08	.10 2.54	.010 .25	.100 2.54	.050 1.27	.400 10.16	.420 10.67	.120 3.05	.060 1.52	.100 2.54	.020 .51						55	A24, E2, F10
QQQ569	—	.31 7.87	.225 5.72	—	—	.100 2.54	.045 1.14	.390 9.90	.420 10.67	.120 3.05	.060 1.52	.100 2.54	—						50	A24, F30
RRR137	.28 7.11	.14 3.56	.030 .76	.020 .51	.145 3.68	.110 2.79	.006 .15	.010 .25	.030 .76										.015	A13, C5, E2, F11
SSS173	1.25 31.75	1.25 31.75	.75 19.05	.63 16.00	.38 9.65	1.000 25.40	.125 3.18	1.000 25.40	—	—	.125 3.18	1.688 42.88	2.18 55.38	.75 19.05	.07 1.78				75	A10, A18, D17
TTT166	.375 9.53	.500 12.70	.15 3.81	.020 .51	.075 1.91	.250 6.35	.425 10.80	.187 4.75	.050 1.27	.050 1.27	.070 1.78	.270 6.86	.540 13.72	.060 1.52	.095 2.41	.445 11.30	.208 5.28	.415 10.54	.8	A19, F12
TTT167	.375 9.53	.500 12.70	.23 5.84	.020 0.51	.075 1.91	.250 6.35	.425 10.80	.187 4.75	.050 1.27	.050 1.27	.070 1.78	.270 6.86	.540 13.72	.060 1.52	.095 2.41	.445 11.30	.208 5.28	.415 10.54	.8	A19, F13
VVV180	1.80 45.72	1.75 44.45	.66 16.76	.125 3.18	1.675 42.55	.125 3.18	.125 3.18	1.625 41.28	.31 7.87	.63 16.00	1.13 28.70	.88 22.35							34	A4, D17

tolerance .x±.1 .xx±.03 .xxx±.015 inch

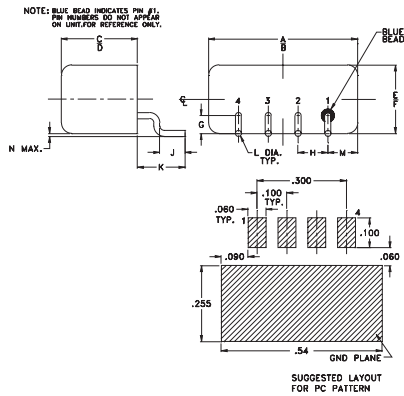
oz. = grams x.0353

*NOTES:

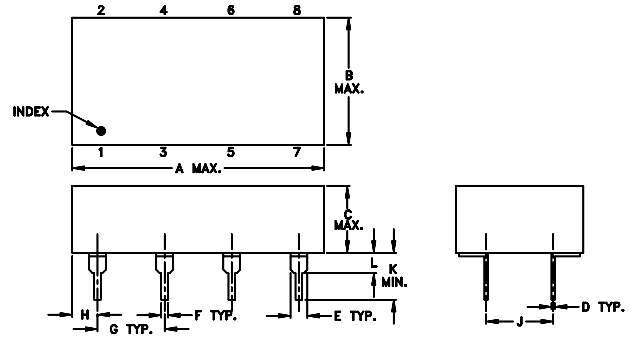
- A. MATERIAL AND FINISH
 - A1. Header material C.R.S Pin material: #52 alloy. Finish: electro tin, hot oil flowed. Cover material: cupro-nickel.
 - A4. Case material: aluminum alloy. Finish: irridite per MIL-C-5541.
 - A10. Case material: aluminum alloy. Finish: grey paint or yellow irridite.
 - A13. Case material: plastic. Lead finish: tin-lead plate.
 - A18. Mounting bracket finish: irridite or clear anodize.
 - A19. Case material plastic, G-10 base. Termination finish: solder plate
 - A24. Case material ceramic. Lead finish: solder plate.
- B. MOUNTING
 - B7. Pin's meniscus (of header) 0.015" max.
- C. MARKING
 - C5. RF output is identified by index mark, model dash number by alphanumeric code.
- D. CONNECTORS
 - D17. Connectors; Female SMA only.
- E. SPECIAL TOLERANCES
 - E1. Pin diameter ±.005 inch.
 - E2. Lead width ±.010; lead thickness ±.005 inch.
- F. PACKAGING
 - F1-30. Tape and reel packaging available. See Tape & Reel packaging information for details. To order Tape & Reel version add -TR suffix to model.

OUTLINE DRAWINGS

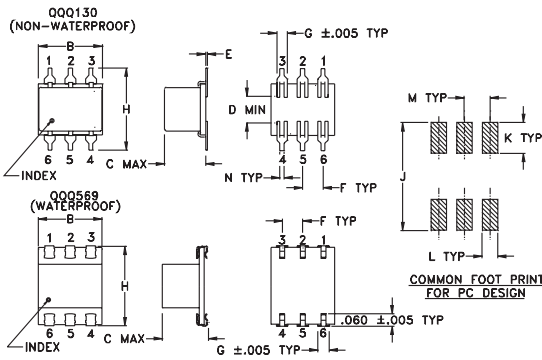
NNN



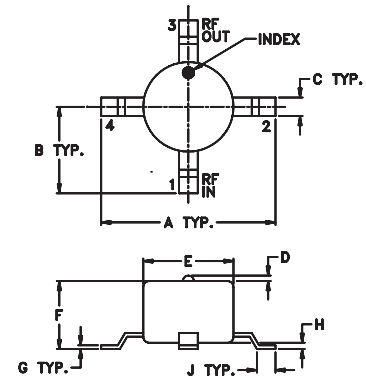
PPP



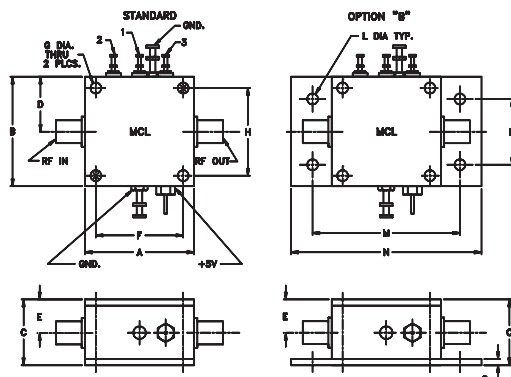
QQQ



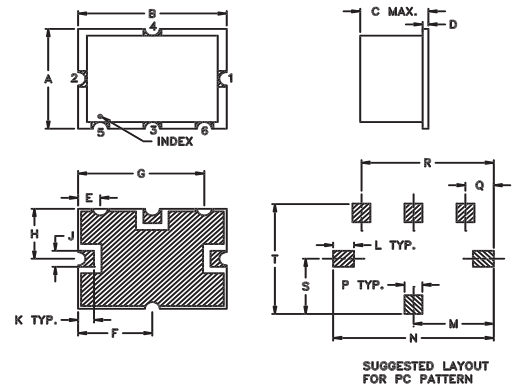
RRR



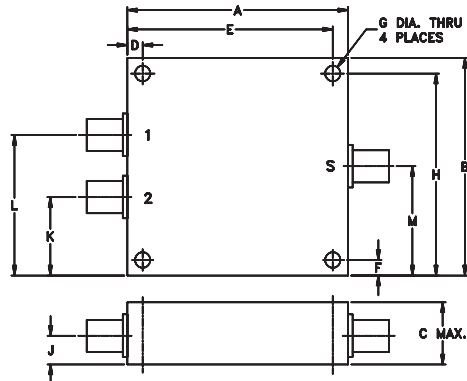
SSS



TTT



VVV



The Design Engineers Search Engine
Provides Actual Data Instantly
At: <http://www.minicircuits.com>

In Stock... Immediate Delivery
For Custom Versions Of Standard Models
Consult Our Applications Dept.

